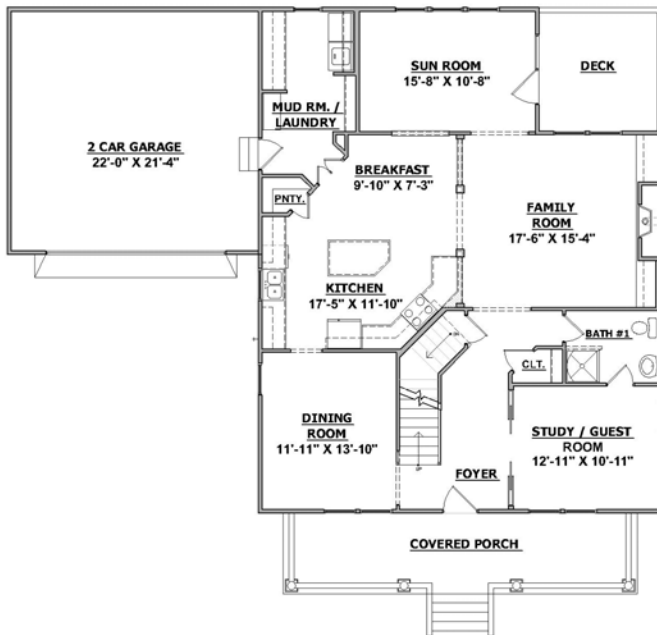


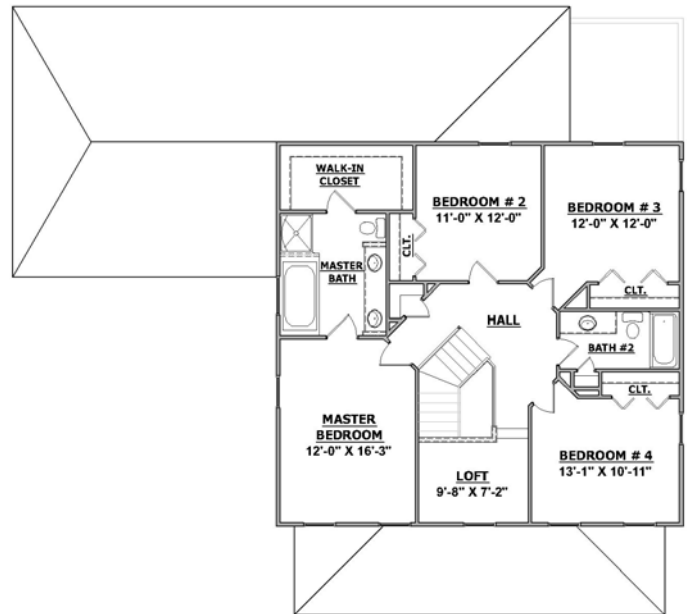
Welcome to the

Blue Ridge

The Blue Ridge floorplan is a dynamic layout of spaces with good traffic flow throughout. A study/guest room with attached bath is included in the open plan main level, which allows the homeowner to tailor the home to their lifestyle. Loft space on the upper level adds extra charm. We would be pleased to discuss new home opportunities with you.



Main Level Floor Plan
1498 square feet



Upper Level Floor Plan
1204 square feet

Progress Street
BUILDERS



ProgressStreet.com

540-552-1812

Progress@ProgressStreet.com