

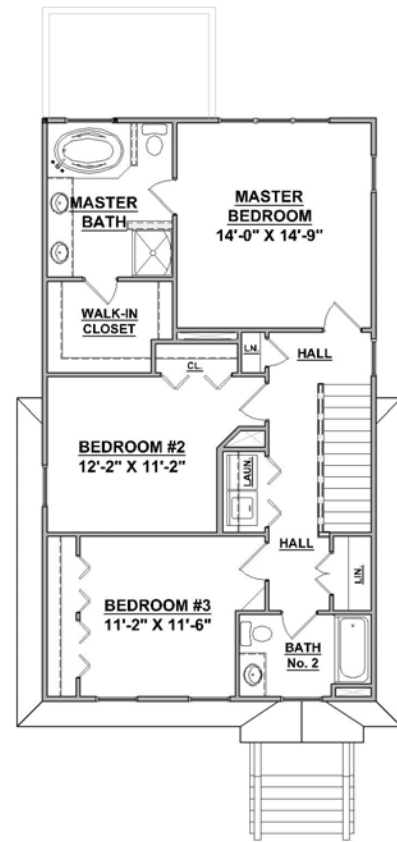
Welcome to the

Periwinkle

An open and accommodating main level with the kitchen at its heart is a popular feature of the Periwinkle floorplan. Ample light and views are exhibited in the Great Room and open living spaces. We would be pleased to discuss new home opportunities with you.



**Main Level
Floor Plan**
1008 square feet



**Upper Level
Floor Plan**
1008 square feet

**Progress Street
BUILDERS**



ProgressStreet.com

540-552-1812



Progress@ProgressStreet.com