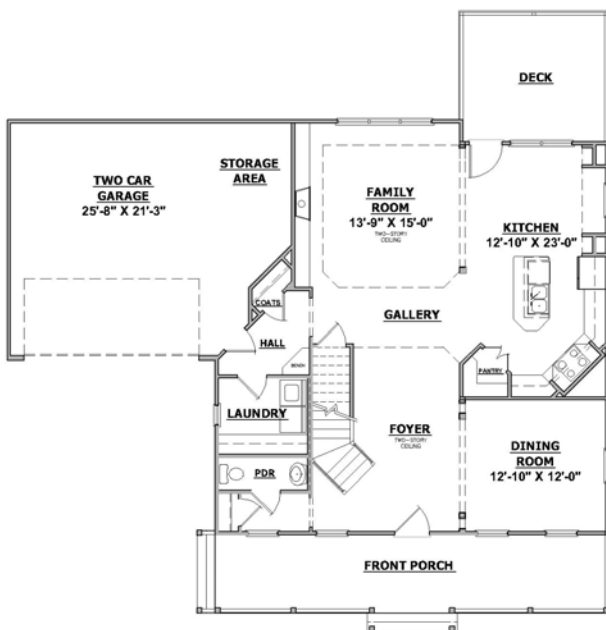
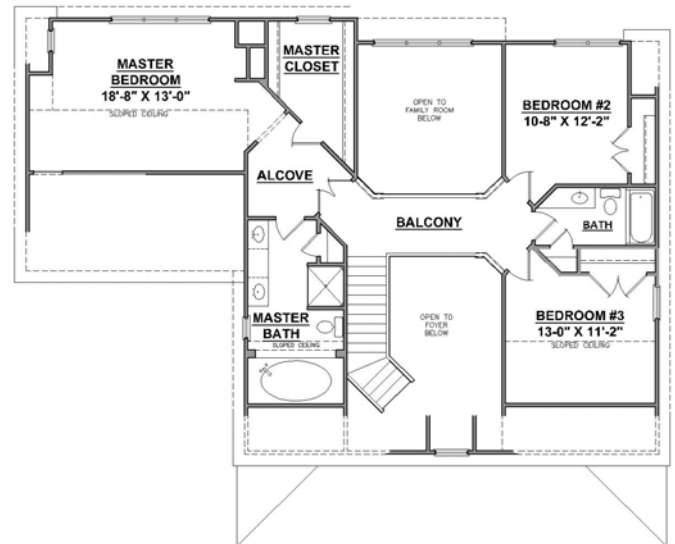


Welcome to the
Poplar

Architectural character is exhibited in many ways in this open floor plan...a two level light-filled foyer and family room and a bridged balcony walkway connecting upper level bedrooms. We would be pleased to discuss new home opportunities with you.



Main Level Floor Plan
 1225 square feet



Upper Level Floor Plan
 1055 square feet