

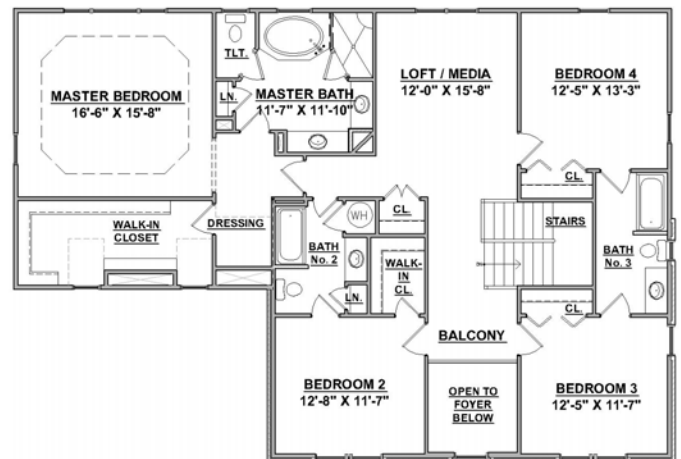
Welcome to the

Shenandoah

With an informal stair location and multiple living spaces on the main and upper levels, the Shenandoah Floorplan's flexibility will compliment any family's lifestyle. We would be pleased to discuss new home opportunities with you.



Main Level Floor Plan
1530 square feet



Upper Level Floor Plan
1731 square feet

Progress Street
BUILDERS

