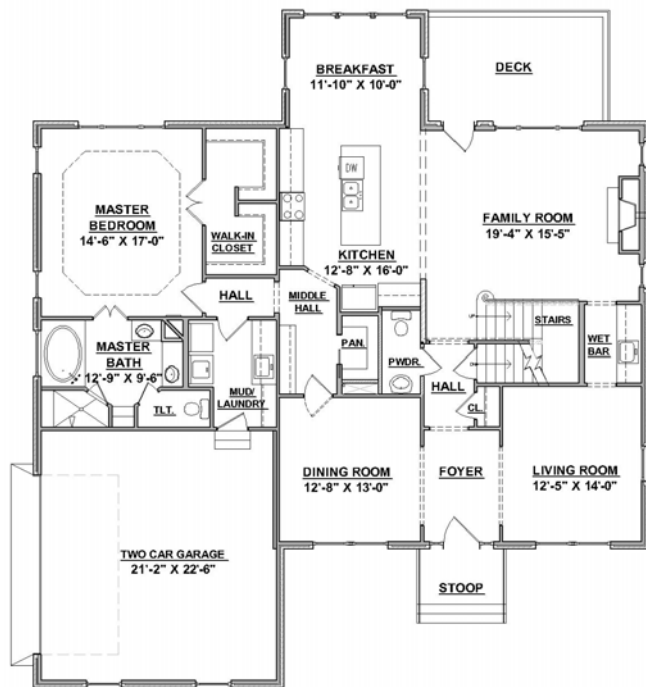
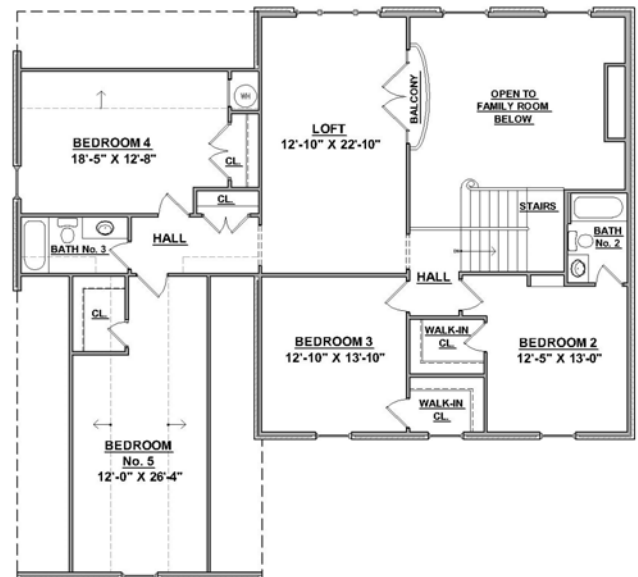


Welcome to the
Wellesley

Graciously accommodating guests is effortless in the Wellesley floorplan with its inviting, open spaces on the main level and abundant bedrooms upstairs. Convenience is key with the master suite located on the main level. A loft and balcony on the upper level overlooks the family room below, adding unique architectural character. We would be pleased to discuss new home opportunities with you.



Main Level Floor Plan
 1971 square feet



Upper Level Floor Plan
 1677 square feet