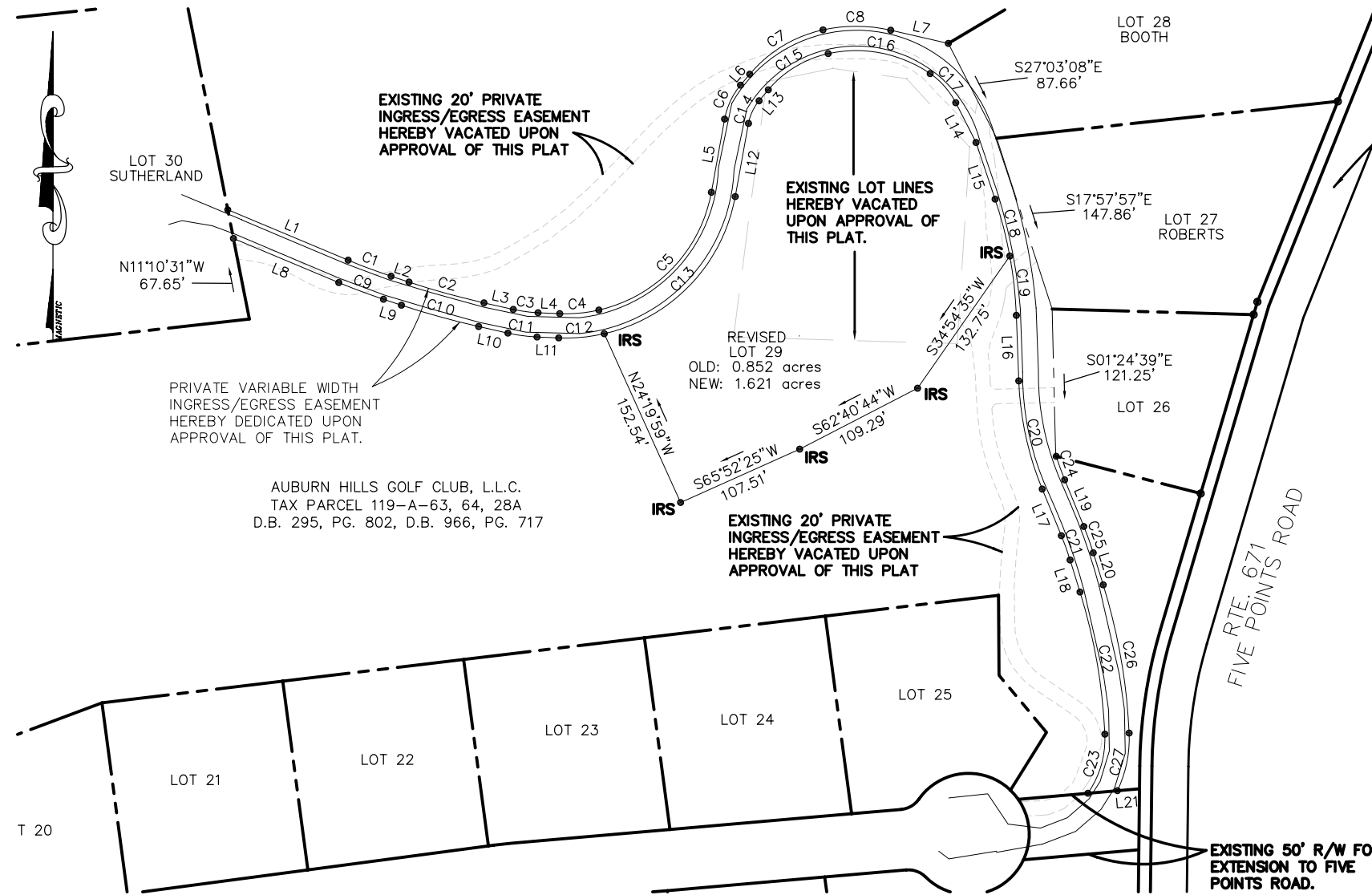


VICINITY MAP  
NOT TO SCALE

LINE	LENGTH	BEARING
L1	107.48	S67°17'33"E
L2	15.56	S71°46'18"E
L3	24.72	S77°18'41"E
L4	17.87	S87°35'22"E
L5	61.25	N10°15'05"E
L6	11.82	N40°02'06"E
L7	48.67	S77°06'23"E
L8	94.05	S67°17'33"E
L9	15.56	S71°46'18"E
L10	24.72	S77°18'41"E
L11	17.87	S87°35'22"E
L12	61.25	N10°15'05"E
L13	11.82	N40°02'06"E
L14	36.74	S27°03'08"E
L15	49.25	S18°35'05"E
L16	54.01	S02°07'57"E
L17	41.48	S22°19'24"E
L18	27.62	S17°14'35"E
L19	41.48	S22°19'24"E
L20	27.62	S17°14'35"E
L21	18.30	S85°02'50"E

CURVE	RADIUS	LENGTH	TANGENT	BEARING	CHORD	DELTA
C1	482.88	37.75	18.89	S69°31'55"E	37.74	4°28'46"
C2	662.71	64.08	32.06	S74°32'30"E	64.05	5°32'23"
C3	115.00	20.63	10.34	S82°27'02"E	20.60	10°16'41"
C4	121.71	32.45	16.32	N84°46'18"E	32.36	15°16'40"
C5	121.71	142.07	80.38	N43°41'31"E	134.14	66°52'53"
C6	60.00	31.19	15.96	N25°08'35"E	30.84	29°47'01"
C7	109.35	71.80	37.25	N58°50'44"E	70.52	37°37'16"
C8	127.69	56.25	28.59	S89°43'31"E	55.79	25°14'15"
C9	502.88	39.31	19.67	S69°31'55"E	39.30	4°28'46"
C10	682.71	66.01	33.03	S74°32'30"E	65.98	5°32'23"
C11	135.00	24.22	12.14	S82°27'02"E	24.18	10°16'41"
C12	141.71	37.79	19.01	N84°46'18"E	37.68	15°16'40"
C13	141.71	165.42	93.59	N43°41'31"E	156.19	66°52'53"
C14	40.00	20.79	10.64	N25°08'35"E	20.56	29°47'01"
C15	89.35	58.67	30.44	N58°50'44"E	57.62	37°37'16"
C16	107.69	88.02	46.64	S78°55'39"E	85.60	46°49'59"
C17	65.00	32.29	16.48	S41°16'53"E	31.95	28°27'31"
C18	340.00	48.42	24.25	S14°30'19"E	48.37	8°09'32"
C19	340.00	49.21	24.65	S06°16'45"E	49.17	8°17'36"
C20	260.00	91.62	46.29	S12°13'41"E	91.15	20°11'27"
C21	240.00	21.28	10.65	S19°47'00"E	21.27	5°04'50"
C22	465.64	119.15	59.90	S09°54'45"E	118.82	14°39'40"
C23	79.54	51.50	26.69	S15°57'51"W	50.60	37°05'31"
C24	240.00	20.63	10.32	S19°51'38"E	20.63	4°55'33"
C25	260.00	23.05	11.53	S19°47'00"E	23.05	5°04'50"
C26	485.64	124.27	62.47	S09°54'45"E	123.93	14°39'40"
C27	99.54	48.91	24.96	S11°29'38"W	48.42	28°09'07"



AUBURN HILLS GOLF CLUB, L.L.C.  
TAX PARCEL 119-A-63, 64, 28A  
D.B. 295, PG. 802, D.B. 966, PG. 717

NOTES

1. OWNER/DEVELOPER  
AUBURN HILLS GOLF CLUB, L.L.C.  
3732 RINER ROAD  
RINER, VA. 24149  
ATTN: JOHN SUTHERLAND
2. ENGINEER/SURVEYOR  
DRAPER ADEN ASSOCIATES  
2206 SOUTH MAIN ST.  
BLACKSBURG, VA. 24060
3. THIS PLAT PREPARED WITHOUT THE BENEFIT OF A TITLE REPORT.
4. SUBJECT PROPERTY IS NOT WITHIN THE LIMITS OF THE 100 YEAR FLOOD PLAIN AS DETERMINED BY THE FEDERAL INSURANCE ADMINISTRATION, U.S. DEPARTMENT OF HOUSING AND URBAN DEVELOPMENT.
5. RECORD NORTH BASED ON PLAT (PLAN NO. P-7163, DATED 8/29/96) BY LAND SURVEYOR, MARV D. STINE OF HIGHLAND SURVEYS.
6. THE SUBJECT PROPERTY IS ZONED P.U.D. RESIDENTIAL
7. THIS PLAT HAS BEEN PREPARED IN ACCORDANCE WITH APPROVED MASTER PLAN FOR AUBURN HILLS GOLF CLUB, L.L.C., AS APPROVED BY THE MONTGOMERY COUNTY BOARD OF SUPERVISORS ON MAY 12, 1997. (SEE ORDINANCE 1997-8)

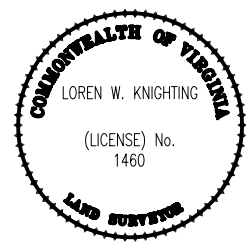
**Draper Aden Associates**  
Engineering ♦ Surveying ♦ Environmental Services

Blacksburg, VA  
2206 South Main Street  
Blacksburg, VA 24060  
540-552-0444 Fax: 540-552-0291  
www.daa.com

Richmond, VA  
Charlottesville, VA  
Hampton Roads, VA

PLAT SHOWING REVISION LOT 29  
AND PRIVATE INGRESS/EGRESS EASEMENT  
AUBURN HILLS GOLF CLUB, L.L.C.  
MONTGOMERY COUNTY, VIRGINIA

REVISIONS	
DESIGNED BY:	N/A
DRAWN BY:	JDB
CHECKED BY:	LWK
SCALE:	1" = 80'
DATE:	07-20-05
PROJECT NUMBER:	7533-29



THIS PLAT NOT TO BE RECORDED WITHOUT APPROVAL

P:\Scattered Jobs\Auburn Hills\Plat\7533-29\_LOTLINE-REV.dwg May 20, 2011 11:01am