

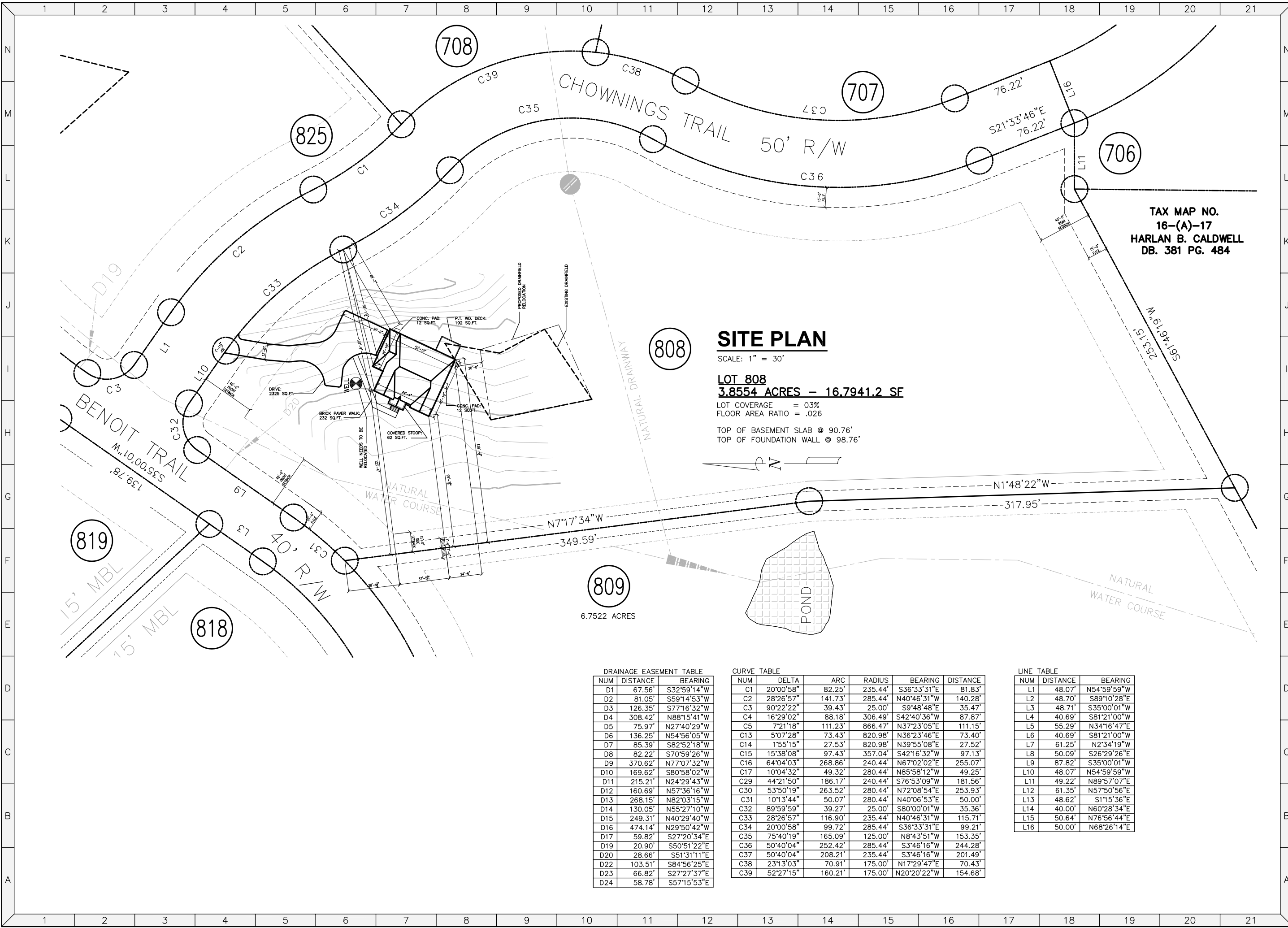
Preston Forest ~ Lot 808
The Richmond
 New Residence - Blacksburg, Virginia

DRAWN BY: MM
 DESIGNED BY: PSB
 CHECKED BY: DB
 DATE: SEP. 13, 2007

REVISIONS

 SCALE: SEE PLAN

SHEET No.
C1.1
 SITE PLAN



SITE PLAN

SCALE: 1" = 30'

LOT 808
3.8554 ACRES - 16,7941.2 SF

LOT COVERAGE = 03%
 FLOOR AREA RATIO = .026

TOP OF BASEMENT SLAB @ 90.76'
 TOP OF FOUNDATION WALL @ 98.76'

DRAINAGE EASEMENT TABLE

NUM	DISTANCE	BEARING
D1	67.56'	S32°59'14"W
D2	81.05'	S59°14'53"W
D3	126.35'	S77°16'32"W
D4	308.42'	N88°15'41"W
D5	75.97'	N27°40'29"W
D6	136.25'	N54°56'05"W
D7	85.39'	S82°52'18"W
D8	82.22'	S70°59'26"W
D9	370.62'	N77°07'32"W
D10	169.62'	S80°58'02"W
D11	215.21'	N24°29'43"W
D12	160.69'	N57°36'16"W
D13	268.15'	N82°03'15"W
D14	130.05'	N55°27'10"W
D15	249.31'	N40°29'40"W
D16	474.14'	N29°50'42"W
D17	59.82'	S27°20'34"E
D19	20.90'	S50°51'22"E
D20	28.66'	S51°31'11"E
D22	103.51'	S84°56'25"E
D23	66.82'	S27°27'37"E
D24	58.78'	S57°15'53"E

CURVE TABLE

NUM	DELTA	ARC	RADIUS	BEARING	DISTANCE
C1	20°00'58"	82.25'	235.44'	S36°33'31"E	81.83'
C2	28°26'57"	141.73'	285.44'	N40°46'31"W	140.28'
C3	90°22'22"	39.43'	25.00'	S9°48'48"E	35.47'
C4	16°29'02"	88.18'	306.49'	S42°40'36"W	87.87'
C5	7°21'18"	111.23'	866.47'	N37°23'05"E	111.15'
C13	5°07'28"	73.43'	820.98'	N36°23'46"E	73.40'
C14	1°55'15"	27.53'	820.98'	N39°55'08"E	27.52'
C15	15°38'08"	97.43'	357.04'	S42°16'32"W	97.13'
C16	64°04'03"	268.86'	240.44'	N67°02'02"E	255.07'
C17	10°04'32"	49.32'	280.44'	N85°58'12"W	49.25'
C29	44°21'50"	186.17'	240.44'	S76°53'09"W	181.56'
C30	53°50'19"	263.52'	280.44'	N72°08'54"E	253.93'
C31	10°13'44"	50.07'	280.44'	N40°06'53"E	50.00'
C32	89°59'59"	39.27'	25.00'	S80°00'01"W	35.36'
C33	28°26'57"	116.90'	235.44'	N40°46'31"W	115.71'
C34	20°00'58"	99.72'	285.44'	S36°33'31"E	99.21'
C35	75°40'19"	165.09'	125.00'	N8°43'51"W	153.35'
C36	50°40'04"	252.42'	285.44'	S3°46'16"W	244.28'
C37	50°40'04"	208.21'	235.44'	S3°46'16"W	201.49'
C38	23°13'03"	70.91'	175.00'	N17°29'47"E	70.43'
C39	52°27'15"	160.21'	175.00'	N20°20'22"W	154.68'

LINE TABLE

NUM	DISTANCE	BEARING
L1	48.07'	N54°59'59"W
L2	48.70'	S89°10'28"E
L3	48.71'	S35°00'01"W
L4	40.69'	S81°21'00"W
L5	55.29'	N34°16'47"E
L6	40.69'	S81°21'00"W
L7	61.25'	N2°34'19"W
L8	50.09'	S26°29'26"E
L9	87.82'	S35°00'01"W
L10	48.07'	N54°59'59"W
L11	49.22'	N89°57'07"E
L12	61.35'	N57°50'56"E
L13	48.62'	S1°15'36"E
L14	40.00'	N60°28'34"E
L15	50.64'	N76°56'44"E
L16	50.00'	N68°26'14"E